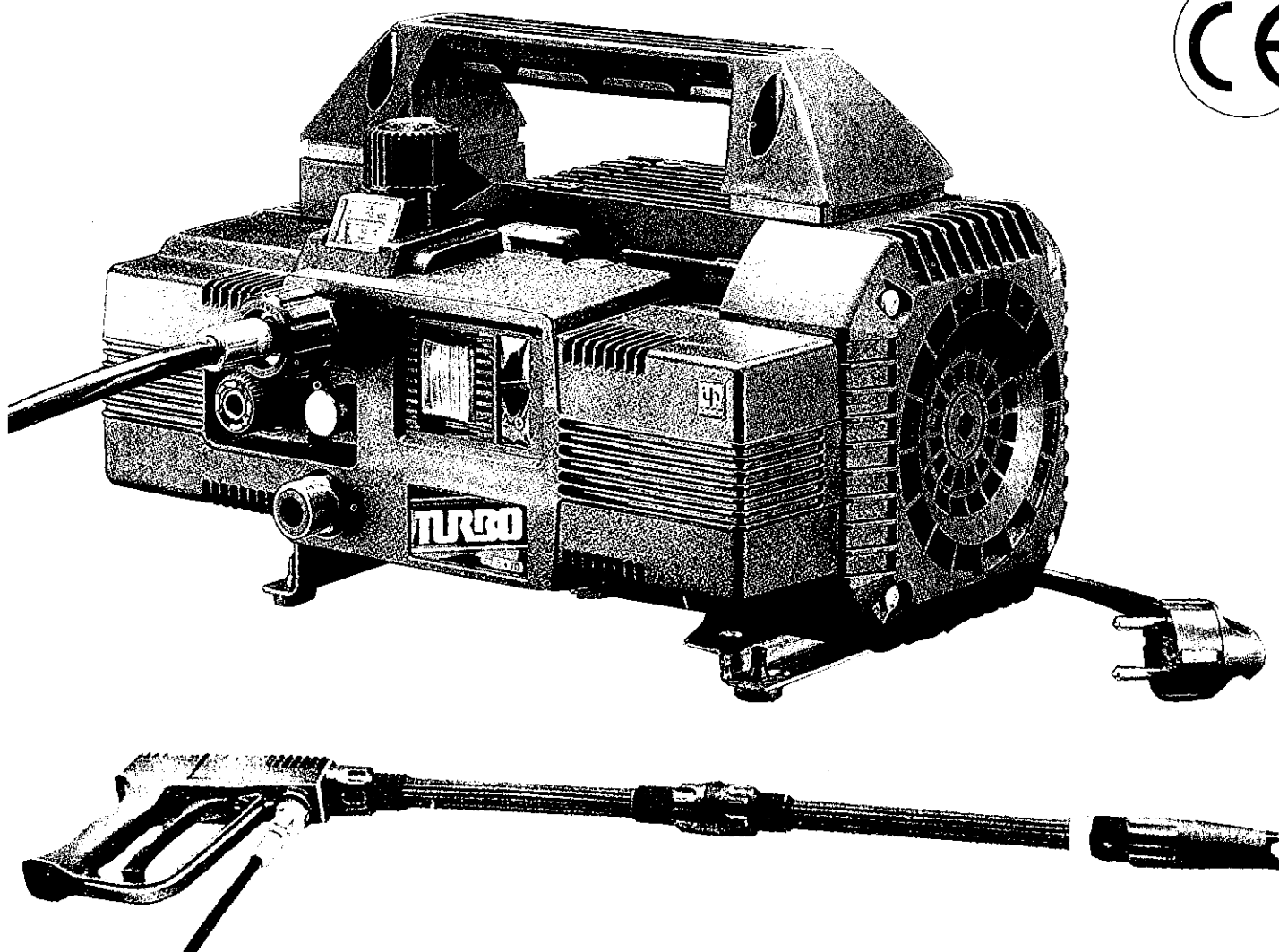


QUIKY



- OPERATING INSTRUCTIONS
- MODE D'EMPLOI
- BEDIENUNGSANLEITUNG
- INSTRUCCIONES PARA EL USO
- MANUAL DE INSTRUÇÕES
- LIBRETTO ISTRUZIONI
- INSTRUCTIE BOEK
- BRUKSANVISNING
- INSTRUKTIONSBOG
- KÄYTTÖOHJE
- INSTRUKSJONS-BOK
- Βιβλιαράκι οδηγιών χρήσεως

TURBO 11.50
TURBO 8.70
TURBO 15
TURBO 19
TURBO 21
TURBO 11.70
TURBO 8.90
TURBO 10.100



IMPORTANT SAFETY INSTRUCTIONS

This book has important information for the use and safe operation of this machine.

Read and understand all warnings before you start working.

WARNING - WHEN USING THIS MACHINE, BASIC PRECAUTIONS SHOULD BE FOLLOWED.

1. Read all the instructions before using the machine.
2. To reduce risk of injury, close supervision is necessary when the machine is used near children.
3. Know how to stop the machine and bleed pressure quickly. Be quite familiar with the controls.
4. Stay alert! Watch what you are doing.
5. Do not operate the machine when fatigued or under the influence of alcohol or drugs.
6. Keep operating area clear of all persons.
7. Do not overreach or stand on unstable support. Keep good footing and balance at all times.
8. Follow the maintenance instructions specified in the manual.
9. Read carefully instructions concerning grounding and extension cords on next page.
10. To prevent fire hazard, do not use with or near inflammable such as: gasoline, grain dust, solvents and thinners.
11. This product is provided with a ground fault circuit interrupter built into the power cord plug. If replacement of the plug or cord is needed, use only identical replacement parts that include GFCI protection. This applies only for UL version.

WARNING - RISK OF INJECTION OR INJURY - DO NOT DIRECT DISCHARGE STREAM AT PERSONS.

SAVE THESE INSTRUCTIONS

IMPORTANT SAFETY INSTRUCTIONS

GROUNDING INSTRUCTIONS

This product must be grounded. If it should malfunction or breakdown, provides a path of least resistance for electric current to reduce the risk of electric shock. This product is equipped with a cord having an equipment-grounding conductor and a grounding plug. The plug must be plugged into an appropriate outlet that is properly installed and grounded in accordance with all local codes and ordinances.

DANGER - Improper connection of the equipment-grounding conductor can result in a risk of electrocution. Check with a qualified electrician or service person if you are in doubt as to whether the outlet is properly grounded. Do not modify the plug provided with the product - If it will not fit the outlet, have a proper outlet installed by a qualified electrician.

GROUND-FAULT CIRCUIT - INTERRUPTER PROTECTION (ONLY FOR U.S.A.)

This pressure washer in UL version is provided with a ground-fault circuit-interrupter (GFCI) built into the plug of the power supply cord. This device provides additional protection from the risk of electric shock. Should replacement of the plug or cord become necessary, use only identical replacement parts that include GFCI protection.

EXTENSION CORDS

WARNING - Extension cords are not recommended unless they are plugged into a ground-fault circuit-interrupter found in circuit boxes or protected receptacles.

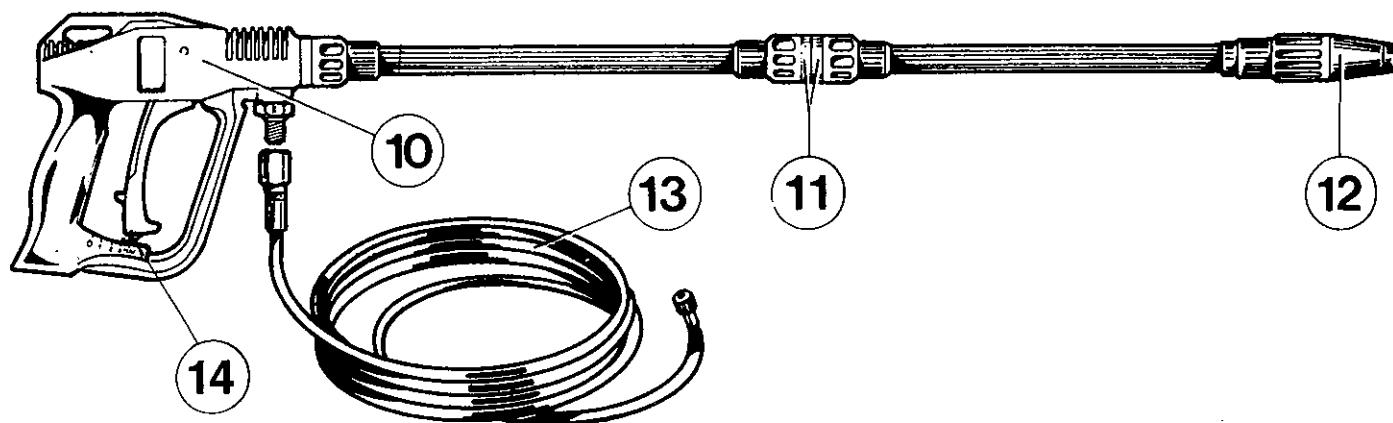
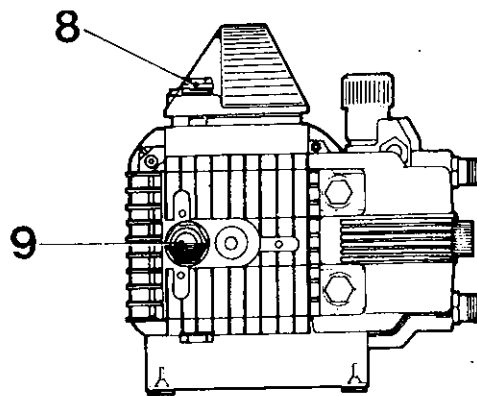
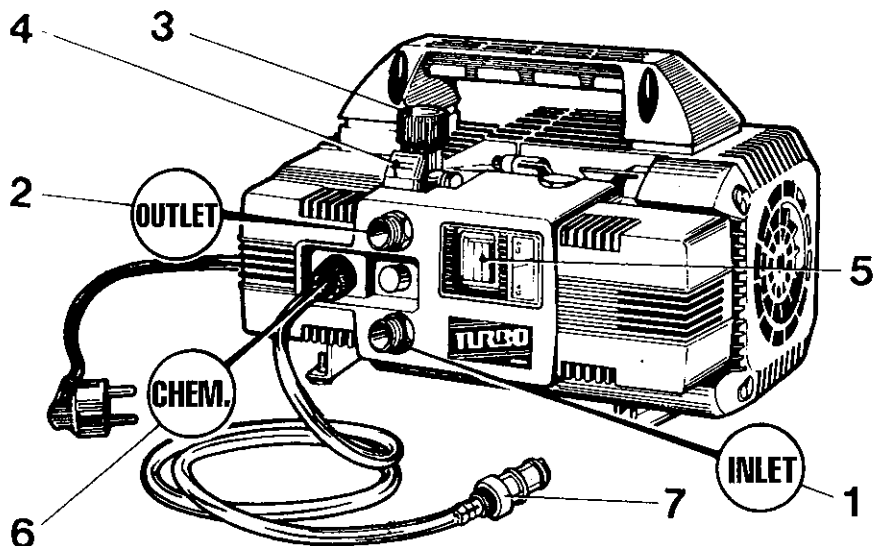
Use only 3-wire extension cord that have 3-prong grounding-type plugs and 3-pole cord connectors that accept the plug from the product.

Use only extension cords that are intended for outdoor use. These extension cords are identified by a marking "Acceptable for use with outdoor appliances; store in-doors while not in use". Use only extension cords having an electrical rating higher than the rating of the product.

Do not use damaged extension cords. Examine extension cord before using and replace if damaged. Do not abuse extension cord and do not yank on any cord to disconnect. Keep cord away from heat and sharp edges. Always disconnect the extension cord from the receptacle before disconnecting the product from the extension cord. When using an extension cord, observe the specifications below:

Cable length	Wire Gauge
Up to 50 ft.	14 AWG
50 to 100 ft.	12 AWG

WARNING - To reduce the risk of electrocution, keep all connections dry and off the ground. Do not touch plug with wet hands.



STANDARD EQUIPMENT

- 1) Inlet hose connection with water filter (INLET)
- 2) High pressure hose connection (OUTLET)
- 3) Pressure adjusting knob
- 4) Pressure indicator
- 5) ON/OFF switch
- 6) Chemical regulator (CHEM)
- 7) Chemical filter
- 8) Oil dipstick
- 9) Oil level indicator
- 10) Automatic gun
- 11) "QUICK-LANCE"
- 12) ROTOTEK (or "MULTIREG")
- 13) High pressure hose
- 14) Safety lock

ÉQUIPEMENT STANDARD

- 1) Raccord d'alimentation eau et filtre (INLET)
- 2) Raccord de tuyau haute pression (OUTLET)
- 3) Bouton de régulation de la pression
- 4) Indicateur de pression
- 5) Interrupteur Marche/Arrêt
- 6) Molette de dosage du détergent (CHEM)
- 7) Crépine du détergent
- 8) Jauge de remplissage d'huile
- 9) Voyant du niveau d'huile
- 10) Pistolet automatique de sécurité
- 11) Lance à raccordement rapide "QUICK-LANCE"
- 12) ROTOTEK (ou "MULTIREG")
- 13) Tuyau haute pression
- 14) Cran de sûreté

STANDARD AUSRÜSTUNG

- 1) Wasser-Anschluß mit Filter (INLET)
- 2) Hochdruck-Ausgang (OUTLET)
- 3) Druckregel-Griff
- 4) Druckanzeiger
- 5) EIN/AUS Schalter
- 6) Chemie-Dosierung (CHEM)
- 7) Chemie-filter
- 8) Ölmeßstab
- 9) Ölstandsanzeige
- 10) Spritzpistole
- 11) Wechsel-Lanze "QUICK-LANCE"
- 12) ROTOTEK (oder "MULTIREG")
- 13) Hochdruckschlauch
- 14) Sicherheitssperre

• CONTROL DEVICES

Before connecting the machine to the water and electrical supplies, it is necessary that you know the function of the controls on the machine. This must be done in accordance with the descriptions in the Instruction Manual, taking reference to the relevant instructions and illustrations.

• DISPOSITIFS DE CONTRÔLE

Avant de brancher l'appareil sur les réseaux d'alimentation d'eau et d'électricité, il est nécessaire de bien connaître le fonctionnement de ses dispositifs de contrôle. Effectuer cette opération en vous référant aux instructions données dans ce manuel et aux indications et illustrations y relatives.

• BEDIENUNGS- UND KONTROLLVORRICHTUNGEN

Bevor Sie das Gerät mit Wasser- und Stromanschlüssen verbinden ist es notwendig, daß Sie die Bedienungs- und Kontrollvorrichtungen des Gerätes verstehen. Dies muß anhand der Beschreibungen und Illustrationen in der Bedienungsanleitung erfolgen.

• DISPOSITIVOS DE PUESTA EN MARCHA Y CONTROL

Antes de conectar el equipo a las redes de alimentación de agua y electricidad, es necesario conocer sus dispositivos de puesta en marcha y control. Efectuar estas operaciones siguiendo las indicaciones que figuran en el manual de instrucciones así como de sus ilustraciones gráficas correspondientes.

• DISPOSITIVO DE COMANDO E CONTROLLO

Antes da ligação às redes de alimentação hídrica e eléctrica, é necessário saber qual a função dos dispositivos de comando e controlo da máquina. Efectuar esta operação conforme descrito no Manual de Instruções.

• DISPOSITIVI DI COMANDO E CONTROLLO

Prima dell'allacciamento alla rete di alimentazione idrica ed elettrica è necessario conoscere la funzione dei dispositivi di comando e controllo della macchina. Effettuare questa operazione seguendo quanto descritto nel Manuale Istruzioni facendo riferimento alle indicazioni e illustrazioni relative.

• CONTROLE MIDDELEN

Voordat u de machine aansluit op het water- en de electriciteitsvoorziening, is het noodzakelijk dat u de werking van de controle middelen van de machine kent. Dit moet worden uitgevoerd in overeenstemming met de beschrijving in de HANDLEIDING, en met inachtneming van de betreffende aanduidingen en illustraties.

• KONTROLLER

Innan du kopplar tvätten till vatten- och elnät måste du veta hur tvättens olika kontroller fungerar. Därför måste du noggrant läsa beskrivningarna i handboken, samtidigt som du kollar vilka kontroller på teckningarna som motsvarar dem på maskinen.

• KONTROL FUNKTIONER

Inden de tilslutter maskinen til el og vand er det vigtigt de kender kontrolfunktionerne på maskinen. Dette skal gøres i henhold til beskrivelser og illustrationer i instruktionsbogen.

• HALLINTALAITTEET

Ennenkuin kytket painepesuria tuloveteen ja sähköliitäntään, on välttämätöntä että olet perillä pesurin eri hallintalaitteiden toiminnasta. Tutustuminen hallintalaitteisiin on tehtävä käyttöohjeen mukaan ottaen huomioon annetut ohjeet ja kuvaselitykset.

• KONTROLL SKJEMA

Før du lar maskinen tilsluttes vann og elektrisitet er det nødvendig at du kjenner kontrollrutinene for maskinen. Disse rutiner skal være i oværensstemmelse med beskrivelse i instruksjonsmanualen, med henvisning til relevante angivelser og illustrasjoner.

• ΣΥΣΤΗΜΑΤΑ ΕΛΕΓΧΟΥ ΚΑΙ ΛΕΙΤΟΥΡΓΙΑΣ

Πρίν πραγματοποιήσετε την υδραυλική και ηλεκτρική σύνδεση, πρέπει να γνωρίζετε τη λειτουργία των οργάνων ελέγχου και τη λειτουργία της μηχανής. Οι συνδέσεις πρέπει να πραγματοποιούνται σύμφωνα με τις οδηγίες που υπάρχουν στο τεχνικό εγχειρίδιο.

CONGRATULATIONS on the choice you have made. This shows your level of technical knowledge and taste for beautiful things.

You have in fact purchased an appliance of high technology made by the largest manufacturer of high pressure pumps in the world.

It is a useful, versatile machine which you will use for a long time.

THIS INSTRUCTION MANUAL IS AN INTEGRAL PART OF THE MACHINE AND MUST BE READ CAREFULLY BEFORE THE UNIT IS INSTALLED, TURNED ON AND USED.

The manual contains important information and instructions for the **SAFE USAGE** and **MAINTENANCE** of the machine. Therefore it must be kept in a safe place.

TECHNICAL DATA

MODEL		TURBO 11-50	TURBO 8-70	TURBO 15	TURBO 19	TURBO 21	TURBO 11-70	TURBO 8-90	TURBO 10-100
Portata		11 l/min 2.9 gpm	8 l/min 2.1 gpm	8 l/min 2.1 gpm	8 l/min 2.1 gpm	8 l/min 2.1 gpm	11 l/min 2.9 gpm	8 l/min 2.1 gpm	10 l/min 2.6 gpm
E.W. bar/Mpa/P.S.I.: specific pressure of the jet, in bar / MPa / P.S.I.									
Equivalent washing impact of the jet with ROTONOZZLE	E.W. bar	100	145	120	130	138	145	160	170
	E.W. MPa	10	14,5	12	13	13,8	14,5	16	17
	E.W. P.S.I.	1450	2100	1750	1885	2000	2100	2320	2465
Max Working pressure	bar	50	70	55	60	70	70	90	100
	MPa	5	7	5,5	6	7	7	9	10
	P.S.I.	725	1000	800	870	1000	1000	1300	1450
Reaction thrust of the jet (recoil)		< 20 N	< 20 N	< 20 N	< 20 N	< 20 N	< 24 N	< 20 N	< 27 N
Admissible peak overpressure	bar	80	100	85	90	100	100	120	130
	MPa	8	10	8,5	9	10	10	12	13
	P.S.I.	1160	1450	1235	1300	1450	1450	1750	1885
Singlephase motor power	kW	1,68-1,64	1,68-1,64	1,36	1,4	1,58	2,2	2,2	2,65
	Hz	50	50	50	60	60	50	50	50
	V / A	230-10,5	230-8,2	100-15	100-15	115-15	230-10,5	230-10,5	230-12
	V / A	240-8	240-8				240-9,5	240-9,5	
Motor protector	Current thermal overload								
Motor protection grade	IPX 5								
Noise level	Lp dB(A)	80							
	Lw dB(A)	93							
Max. inlet water temperature	60° C - 140° F								
Max. suction depth		1 mt 3,3 ft	1 mt 3,3 ft	1 mt 3,3 ft	1 mt 3,3 ft	1 mt 3,3 ft	1 mt 3,3 ft	1 mt 3,3 ft	1 mt 3,3 ft
hose length	8 m. 26 ft.	Thermoplastic material reinforced with nylon braid internal diameter 5/16" Maximum working pressure 130 bar / 13 MPa / 1885 P.S.I.							
Weight		18,5 Kg 40,8 lbs	18,5 Kg 40,8 lbs	18,6 Kg 41 lbs	19,4 Kg 42,8 lbs	19,4 Kg 42,8 lbs	21,4 Kg 47,2 lbs	22,3 Kg 49,2 lbs	23,5 Kg 51,8 lbs
Dimensions		mm 360 x 240 x 235 (h) inches 14,2 x 9,4 x 9,2 (h)					mm 405 x 240 x 235 (h) inches 15,9 x 9,4 x 9,2 (h)		

USE OF THE PRODUCT

DESTINATION OF USE

This appliance is designed exclusively for washing by means of a pressurised water jet objects, things or surfaces eligible to be treated by the mechanical action of a pressurised water jet and by the possible chemical action of liquid detergent additives.

The liquid detergent additives must be chosen in accordance with the chemical compatibility of the surface to be washed.

IMPORTANT: use only biodegradable detergents with pH value between 7 and 12. These detergents must comply with the laws and regulations applicable in the country in which they are used.

THE DESTINATION OF USE OF THIS MACHINE MUST BE STRICTLY ADHERED TO. ANY OTHER USE MUST BE CONSIDERED AS INCORRECT.

THE MANUFACTURER CANNOT BE HELD RESPONSIBLE FOR DAMAGES CAUSED BY INCORRECT USE OF THE MACHINE.

THE MACHINE MUST NOT BE TAMPERED WITH FOR ANY REASON. IN CASES OF TAMPERING THE MANUFACTURER DECLINES ANY RESPONSABILITY ON THE FUNCTIONING AND SAFETY OF THE MACHINE.

IT IS FORBIDDEN TO STORE OR USE THE UNIT IN ENVIRONMENTS WITH POTENTIALLY EXPLOSIVE ATMOSPHERE.

PRELIMINARY OPERATIONS

UNPACKING

Unpack the machine and make sure that it is complete and not damaged. In case it is not complete or damaged, do not use the machine and consult your dealer.

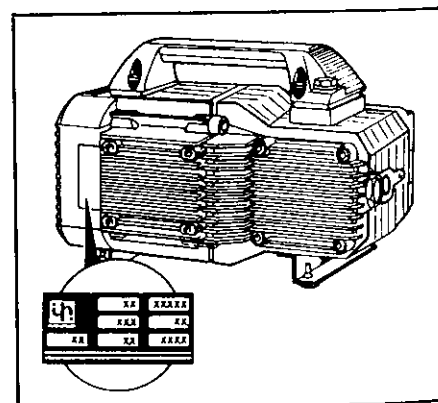
For reasons of packaging or transport, some accessory components can be supplied loose. In this case they must be assembled according to the instructions in this manual.

Make sure that the components of the packaging (bags, boxes, components for fastening) are placed out of the reach of children.

IDENTIFICATION LABEL

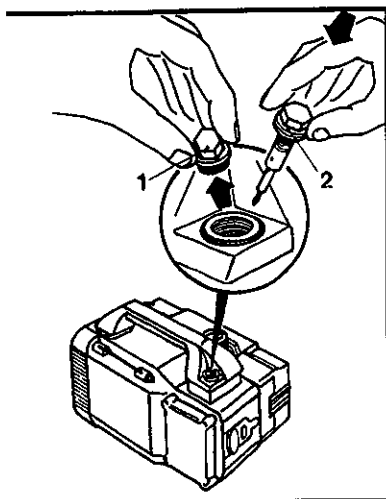
Before using the machine, make sure that it is provided with the Identification Label. In case the Identification Label is missing, do not use the machine and consult your dealer immediately.

The Identification Label with the technical specifications is fixed to the machine.

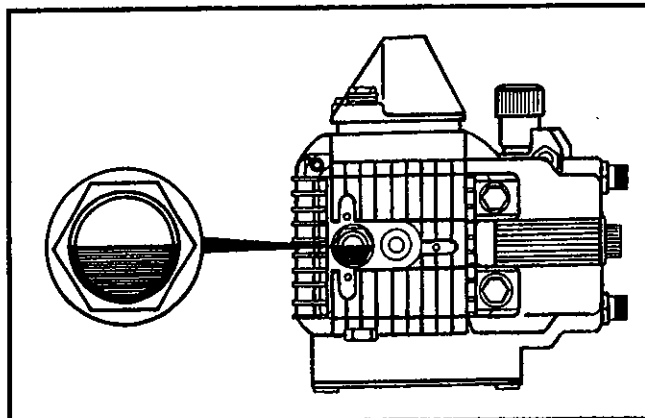


INSTALLATION

THE MACHINE MUST BE SAFELY PLACED ON A FLAT, LEVELLED SURFACE, IN HORIZONTAL POSITION.



Replace the red oil travel plug (1) with the black and yellow dipstick (2), which you will find in the box.



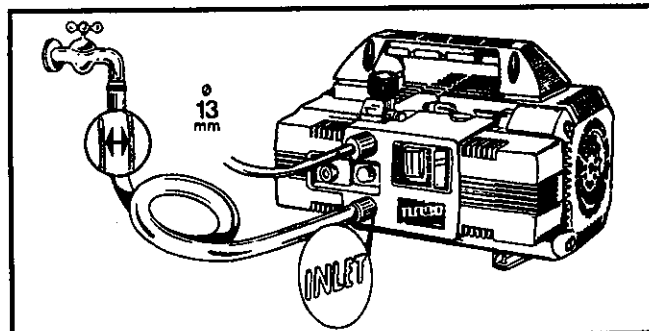
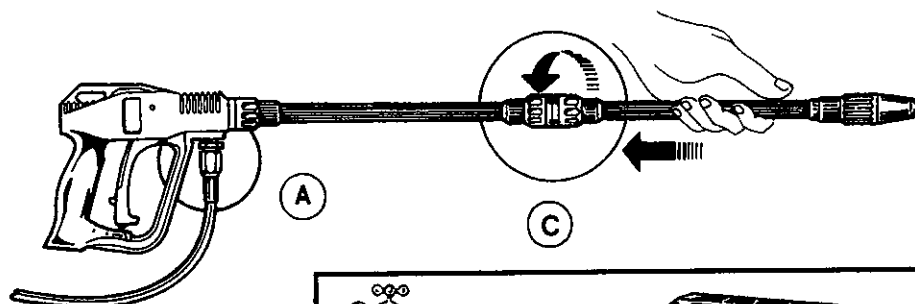
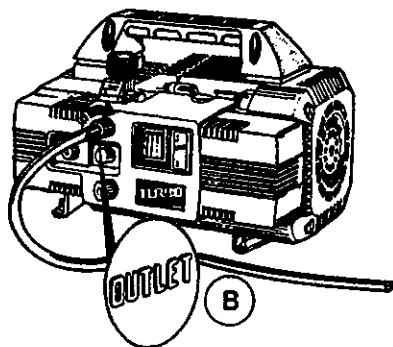
Check that the oil in the sight glass is at the half-way level.

Connection of high pressure line:

1. Connect one end of the high pressure hose to the gun (A) and the other to the outlet connection (B).
2. Assemble the lance by pushing the two halves together and then fix by turning the connector (C).

Connection to water supply:

1. The maximum temperature of the inlet water must not exceed 60°C (140°F).
2. Connect the water supply to the INLET port by means of a reinforced hose (minimum 15 bar/1,5 MPa/200 p.s.i.) with internal diameter of no less than 13 mm (1/2").
3. Considering that the water flow decreases in accordance with the length of the hose, make sure that the minimum quantity of water reaching the machine is in accordance with the chart below:



Model	l/min	G.P.M. USA
8-90 - 8-70 15 - 19 - 21	11	2,9
11-50 - 11-70 10-100	15	4

IMPORTANT

Make sure that the machine is fed with clean water during use. Running the machine without water, or with dirty, sandy water or containing corrosive chemicals, causes serious damage to the machine.

CONNECTION TO ELECTRICAL SUPPLY

1. Make sure that the mains voltage is the same as shown on the Identification Label on the machine.
2. Make sure that the plug complies with your local regulations, and that it is provided with ground connection (earth).
3. The power outlet must be protected by a residual circuit breaker having a sensitivity of less than 30 mA.
4. Do not connect other appliances to the same outlet.
5. Insert the plug after making sure that the switch on the machine is in the OFF position.

WARNING: In case of power failure during operation, turn the unit OFF for safety reasons.

USE OF EXTENSION CORDS

- In case you need to use an extension cord, check that the connection is water tight. Keep all connections off the ground to avoid possible contacts with water.

EXTENSION CORD CHART

Voltage	Length m	Wire gauge mm ²
TURBO 8/70 - 11/50 - 15 - 19 - 21		
220÷240	Up to 20 m	1,5
220÷240	From 20 to 50 m	2,5
100÷115	Up to 20 m	2,5
100÷115	From 20 to 50 m	4
TURBO 8/90 - TURBO 11/70 - TURBO 10/100		
220÷240	Up to 20 m	2,5
220÷240	From 20 to 50 m	4

Starting the machine

1. Now you can turn on the water.
2. Set the pressure to zero by turning the knob anti-clockwise.
3. Switch on the unit.
4. Hold the gun in the open position for a few seconds to allow the air to escape from hoses.
5. At this point adjust the machine to your pressure requirements and you are ready to enjoy your work.



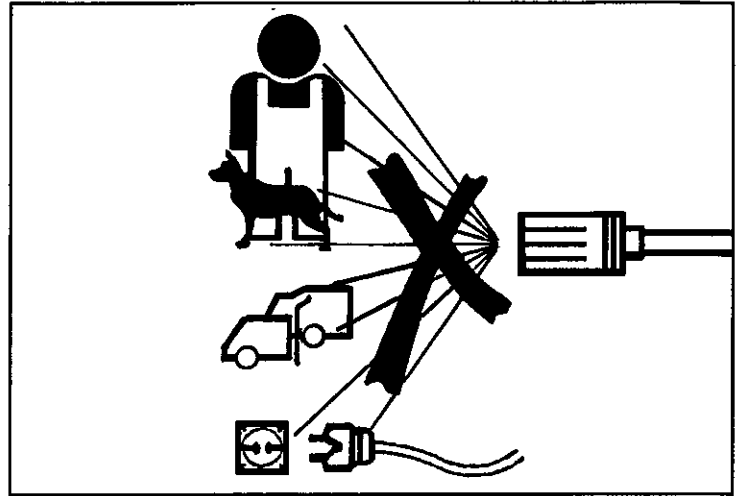
CHECKING AND CHANGING THE OIL

- The level of the oil must be checked periodically.
- The first important oil change must be carried out after the first 20 hours of work and successively every 150 hours.
- In any case we suggest an oil change at least once a year.
- Oil type: SAE 15W40 Mineral.
- Capacity: 0,33 litres.

GENERAL PRECAUTIONS FOR USE

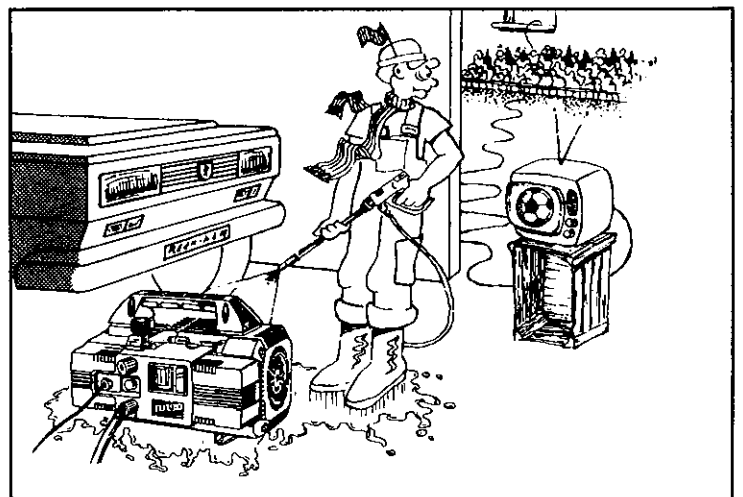
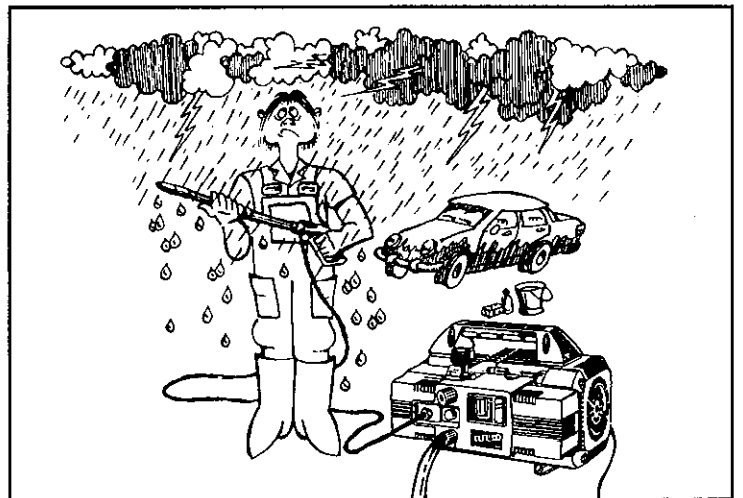
① Keep the Machine out of the reach of children.

② High pressure water jets are potentially dangerous if used incorrectly. In particular, the jet must not be directed against persons or animals, electrical equipment or the machine itself. Do not use the machine when persons and/or animals are within the reach of the jet.



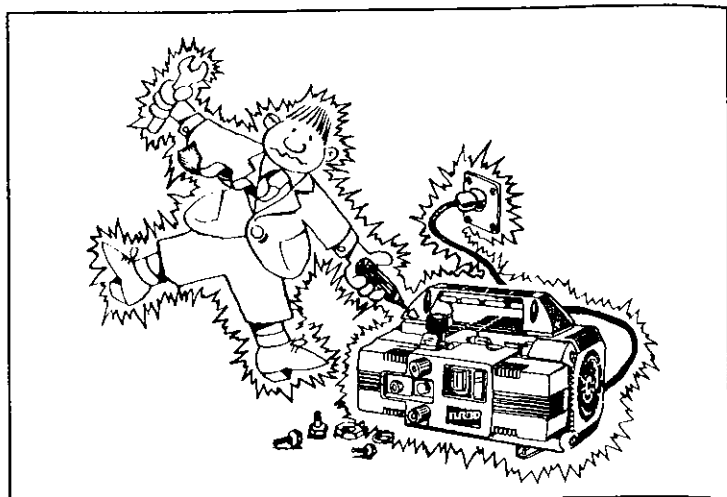
③ The user must operate the machine in safe conditions and situations avoiding any situation of potential danger to himself or other persons. In particular, the user will have to:

- Avoid operating in unstable balance conditions.
- Remember that the high pressure jet generates a recoil when the gun is opened. The force of this recoil changes according to the model and is given in the technical data chart.
- Use adequate protection clothing.
- Wear protective goggles and anti-slip rubber shoes.
- Avoid contaminating the environment with polluting, toxic or harmful substances.

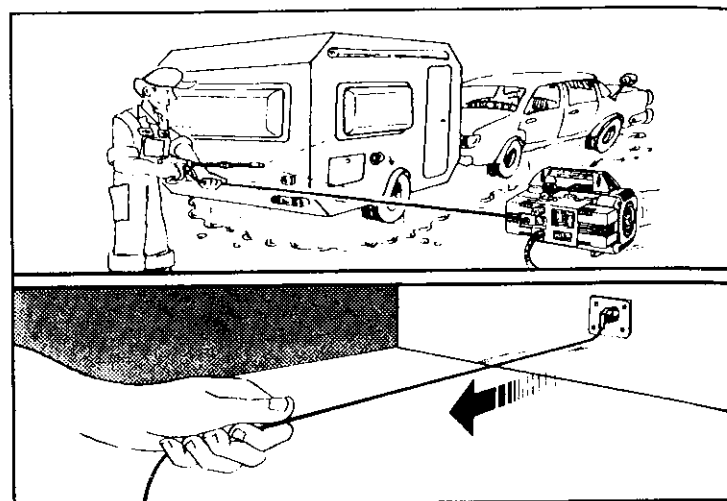


④ This machine is built in compliance with the requirements of the current safety regulations. The use of electrical appliances involves the respect of some basic rules:

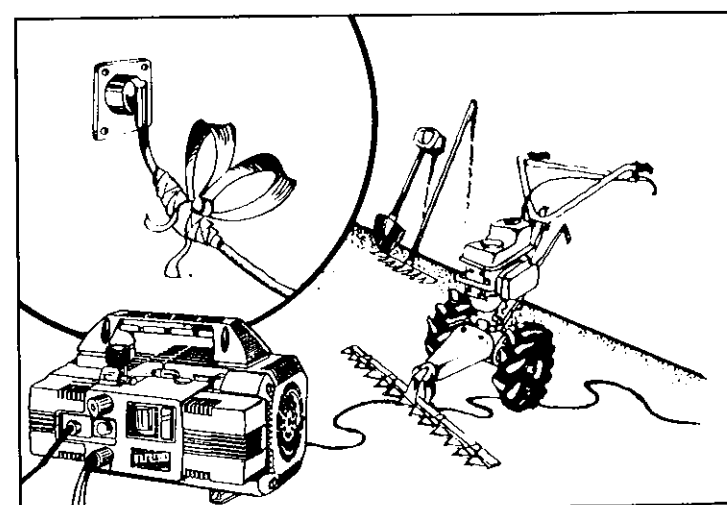
- Do not touch electrical parts or components.
- All operations of inspection, maintenance or repair must be made by qualified personnel only. ALWAYS disconnect the plug from mains before proceeding to any of the above mentioned operations.



⑤ Do not pull power cord to unplug.
Do not pull high pressure hose to move unit.

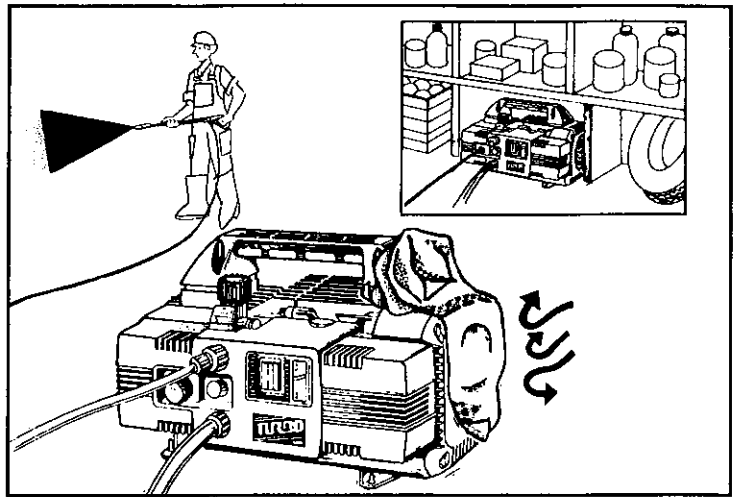


⑥ Before using the machine, inspect power cord to make sure it is not damaged. If it is damaged have it replaced by qualified personnel. Replace power cable only with a cable of the same type as the original, this can be identified by the marking on the outer sleeve. Do not damage or effect risky repair on power cord.

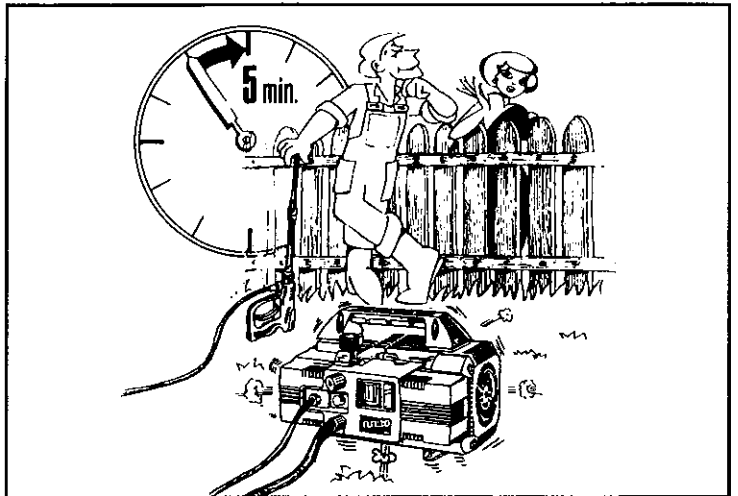


⑦ Before using the machine, inspect high pressure hose to make sure it is not damaged. In case of replacement make sure the new hose has at least the same specifications as the original one. Technical specifications (maximum working pressure, date of manufacturing, name of manufacturer) must be marked on the outer sleeve of the hose.

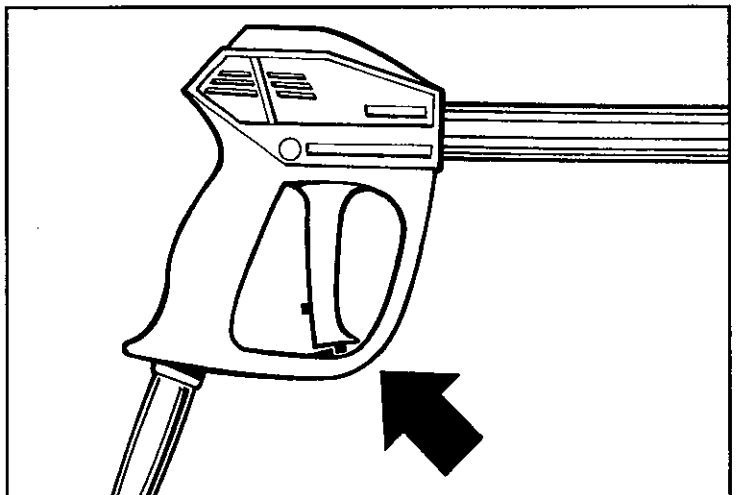
- ⑧ While the machine is running, do not cover it and do not place it in an enclosed space with insufficient ventilation.



- ⑨ Do not leave the machine running for more than 5 minutes with the gun closed. Should it run for a longer period, the temperature of the recirculating water will increase rapidly and could risk damaging the pump seals.



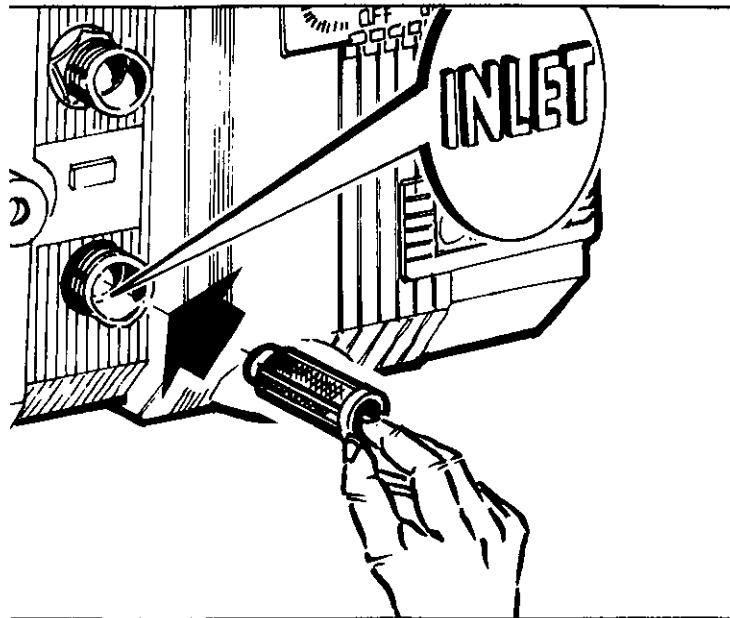
- ⑩ When the machine is not in use, lock gun trigger in safe position to prevent it from being opened by accident.



- ⑪ For the sake of safety use only original spare parts and accessories.

THE MANUFACTURER DECLINES ANY RESPONSIBILITY FOR DAMAGE CAUSED BY NON-COMPLIANCE WITH THE DESTINATION OF USE, WITH THE INSTRUCTIONS AND WARNINGS CONTAINED IN THIS INSTRUCTION MANUAL.

CHECKING THE WATER FILTER



It is important to check water filter before using the machine.

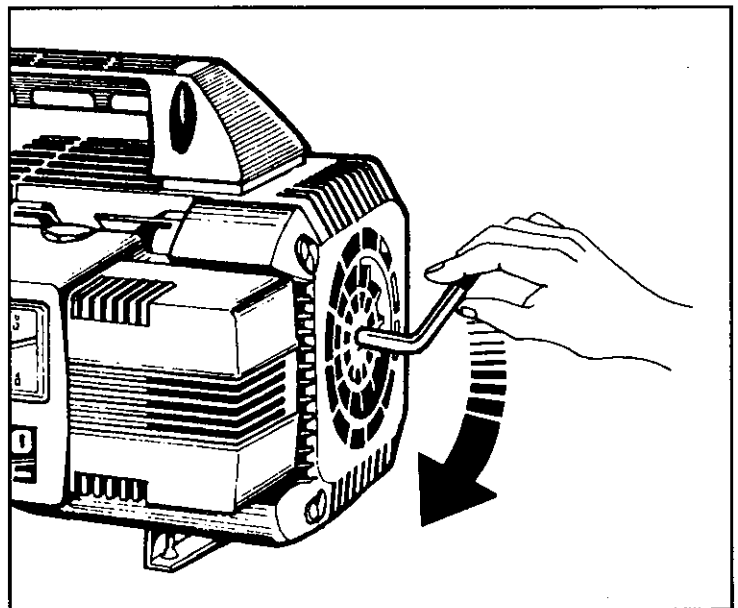
Remember that a well-cleaned filter means good performance and long life for your machine.

PRECAUTIONS IN THE CASE OF STORING AND/OR FREEZING

If the unit is to be stored in a place where there is risk of freezing, or it is to remain unused for more than three months, we recommend placing some antifreeze solution into the pump, (a normal anti-freeze as used in your vehicle is sufficient). If in doubt at low temperatures or any long length of storage time, we suggest you turn the motor with the key provided before starting, to release any possibilities of blockages from freezing or a build up of lime scale deposits.

Taking these precautions before starting will avoid damage to the unit.

Remember to remove the key before switching on.



DISPOSAL OF THE MACHINE

Should you decide not to use the machine anymore, it is recommended to make it unusable by removing the power supply cord.

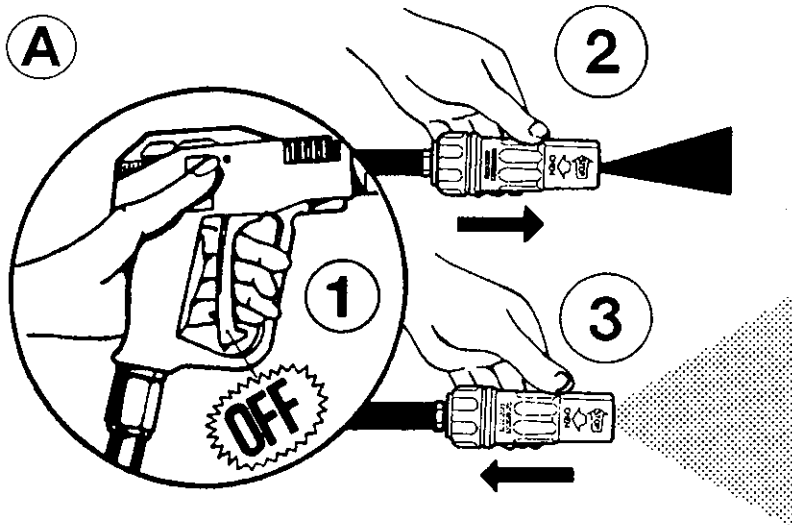
In all cases it must be kept out of the reach of children.

Being as the machine is a special waste, disassemble it and gather the homogeneous parts for disposal according to the applicable laws.

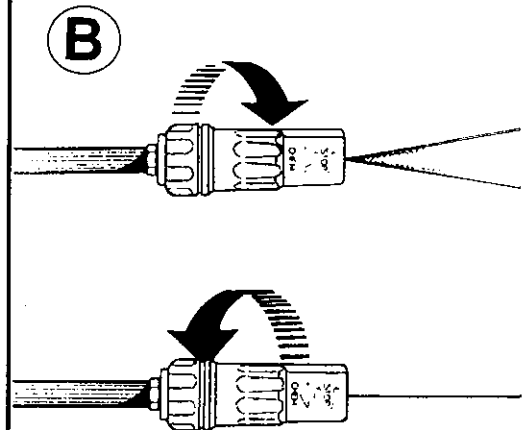
Do not use the scrapped parts as spare parts.

HOW TO USE THE "ROTOTEK" (OR "MULTIREG")

A) Selection of high or low pressure by push-pull action.
The selection of the pressure must be carried out with the gun in closed position (1).



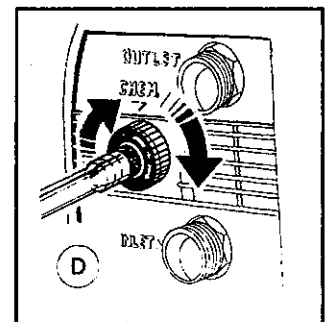
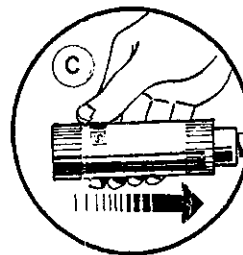
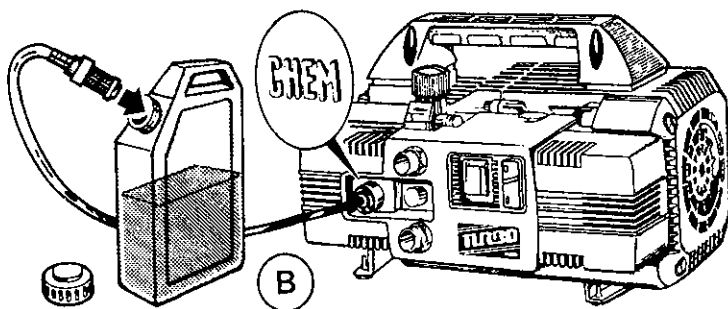
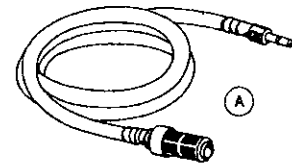
B) Adjustment from straight to fan of water jet, by simple turning of the ROTOTEK.



HOW TO USE THE DETERGENT KIT

The unit can suck and mix detergents and other liquid chemicals thanks to an automatic device incorporated in the unit itself, which is remote controlled by operating the ROTOTEK.

– The unit is equipped with a chemical suction kit (Fig. A).



- Fit the brass connector into the chemical control knob and filter into chemical container (Fig. B).
 - Select low pressure with the ROTOTEK (Fig. C).
 - At this point the suction and mixing of the chemical will start automatically.
 - You can regulate the quantity of chemicals by adjusting the chemical control knob (Fig. D).
 - When you wish to stop using chemicals in order to clean or rinse, simply release the gun trigger and adjust the ROTOTEK to high pressure.
At this point the chemical injection automatically stops.
- If you foresee not using the unit for a long period of time, we suggest to clean the chemical suction kit with clear water to avoid chemical deposit build-up.

TROUBLE SHOOTING

FOR QUALIFIED PERSONNEL ONLY

FAULT	CAUSE	REMEDY
Pump running normally but pressure does not achieve rated values	Pump sucking air Valves worn or dirty Unloader valve packing worn Nozzle incorrect or worn Worn piston packing Dirty filter	Check that hoses and fitting are air tight Check, clean or replace Check and replace Check and replace Check and replace Check and clean
Fluctuating pressure	Valves worn dirty or stuck Pump sucking air Worn piston packing Dirty filter	Check, clean or replace Check that hoses and fittings are air tight Check and replace Check and clean
Pressure drops after period of normal use	Nozzle worn Valves worn, dirty or stuck Unloader valve packing worn Worn piston packing Dirty filter	Check and replace Check, clean or replace Check, clean or replace Check and replace Check and clean
Pump noisy	Pump sucking air Valves dirty or worn Worn bearings Water too hot Dirty filter	Check that hoses and fittings are air tight Check, clean or replace Check and replace if necessary Reduce temperature Check and clean
Presence of water in oil	High humidity in air Piston packing and oil seal worn	Check and change oil twice as often Check and replace
Water dripping from under pump	Piston packing worn The O-rings of piston guide or retained worn	Check and replace Check and replace
Oil dripping	Oil seal worn	Check and replace
The motor does not start when switched on	The plug not well connected or lack of power supply	Check plug, cable and switch
When switching on the unit, the motor hums but does not run	The mains voltage is insufficient, lower than the minimum required The pump is stuck or frozen Incorrect extension cable	Check that the mains power supply is adequate Check by turning the motor manually as described in instructions (page 14) For correct choice see table (page 9)
The motor stops	Tripped thermal overload due to overheating	Check that the mains voltage corresponds to the specifications: TURBO 8/70 - 11/50 : switch off the motor and let it cool a few minutes TURBO 15 - 19 - 21 - 11/70 - 8/90 - 10/100 : wait a few minutes before turning on the unit again

Parts list

Liste de pièces détachées

Ersatzteilliste

Lista de repuestos

Lista de peças de reposição

Nomenclatura ricambi

Onderdelenlijst

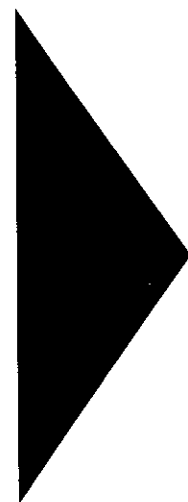
Delelista

Reservedelsliste

Varaosaluettelo

Dele Liste

Λίστα ανταλλακτικών



QUIKY 10-100

- SPARE PARTS KITS
- KITS DE PIECES DETACHEES.
- ERSATZTEILENKITS
- KITS DE REPUESTOS
- KIT RICAMBI

- ONDERDELENKITS
- RESERVEDELS KITS
- RESERVEDELS KITS
- VARAOSAT
- RESERVEDELER I KIT

KIT N.	KIT 1	KIT 83	KIT 84	KIT 96	KIT 86	KIT 97
Positions included	70 - 71 - 72 73 - 74 (75)	80	68 - 69	63 - 64 65 - 66 67	65 - 66 67	63 - 64 66 - 67
Posizioni incluse						
N. pcs.	6	3	6	1	3	3

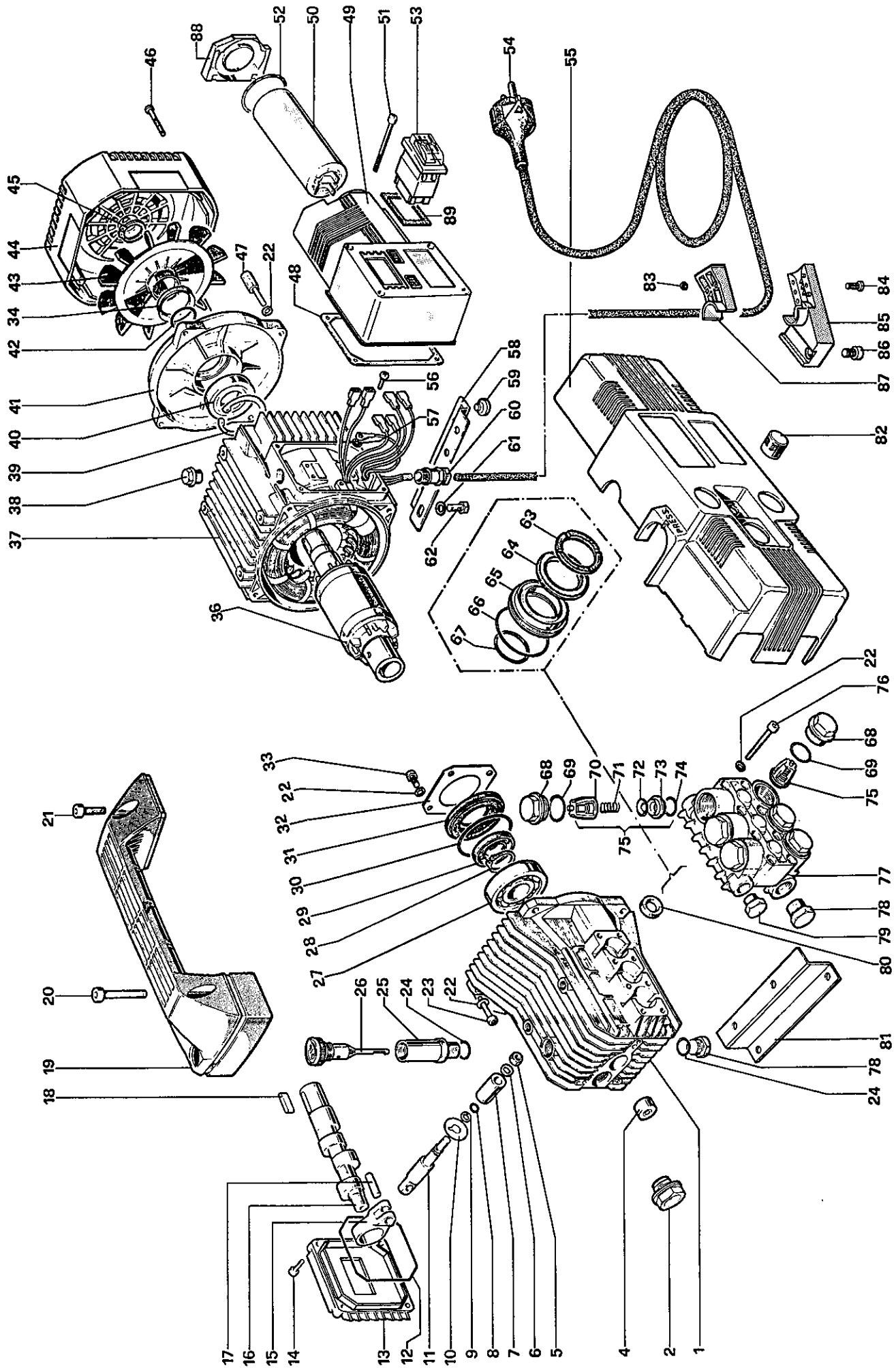
- LIST OF SPARE PARTS
- LISTE DE PIECES DETACHEES
- ERSATZTEILLISTE
- LISTA DE REPUESTOS
- NOMENCLATURA RICAMBI

- ONDERDELENLIJST
- RESERVEDELSLISTA
- RESERVEDELSLISTE
- VARAOSALUETTELO
- RESERVEDELSLISTE

POS.	CODE CODICE	N. PCS.
1	51.0100.22	1
2	97.5968.00	1
4	91.8014.00	1
5	92.2216.00	3
6	96.7008.00	3
7	51.0400.09	3
8	90.3572.00	3
9	90.5022.00	3
10	96.7070.00	3
11	51.0500.56	3
12	90.3917.00	1
13	51.1600.22	1
14	99.1867.00	4
15	51.0300.22	3
16	51.0217.35	1
17	97.7310.00	3
18	91.4877.00	1
19	51.2400.51	1
20	99.3144.00	2
21	99.3069.00	2
22	96.6938.00	20
23	99.1897.00	4
24	90.3833.00	2
25	51.2100.51	1
26	98.2097.00	1
27	91.8328.00	1
28	90.0635.00	1
29	90.1634.00	1
30	90.4097.00	1
31	50.2115.51	1

POS.	CODE CODICE	N. PCS.
32	50.1500.74	1
33	99.1807.00	4
34	90.1652.00	1
36	41.3406.02	1
37	41.3227.02	1
38	98.2093.00	1
39	90.0795.00	1
40	91.8323.00	1
41	41.0700.22	1
42	90.3857.00	1
43	41.0300.51	1
44	41.0400.51	1
45	90.0628.00	1
46	99.1658.00	4
47	41.2104.65	4
48	41.2101.47	1
49	41.2124.51	1
50	93.5658.00	1
51	99.1705.00	4
52	90.3885.00	1
53	93.5027.00	1
54	10.7274.01	1
55	51.2103.51	1
56	99.1515.00	1
57	96.6913.00	1
58	51.2003.74	1
59	98.1924.00	4
60	93.5210.00	1
61	96.7014.00	4
62	99.3037.00	4

POS.	CODE CODICE	N. PCS.
63	51.1000.51	3
64	90.2620.00	3
65	51.0800.70	3
66	90.3604.00	3
67	90.3835.00	3
68	98.2218.00	6
69	90.3847.00	6
70	36.2002.51	6
71	94.7376.00	6
72	36.2001.76	6
73	36.2003.66	6
74	90.3841.00	6
75	36.7032.01	6
76	99.1943.00	8
77	51.1200.41	1
78	98.2100.00	2
79	98.2041.00	1
80	90.1565.00	3
81	51.2002.74	1
82	52.2122.51	1
83	92.1926.00	2
84	99.1306.00	2
85	41.2118.51	1
86	99.3039.00	1
87	41.2119.51	1
88	41.2120.51	1
89	41.2126.84	1

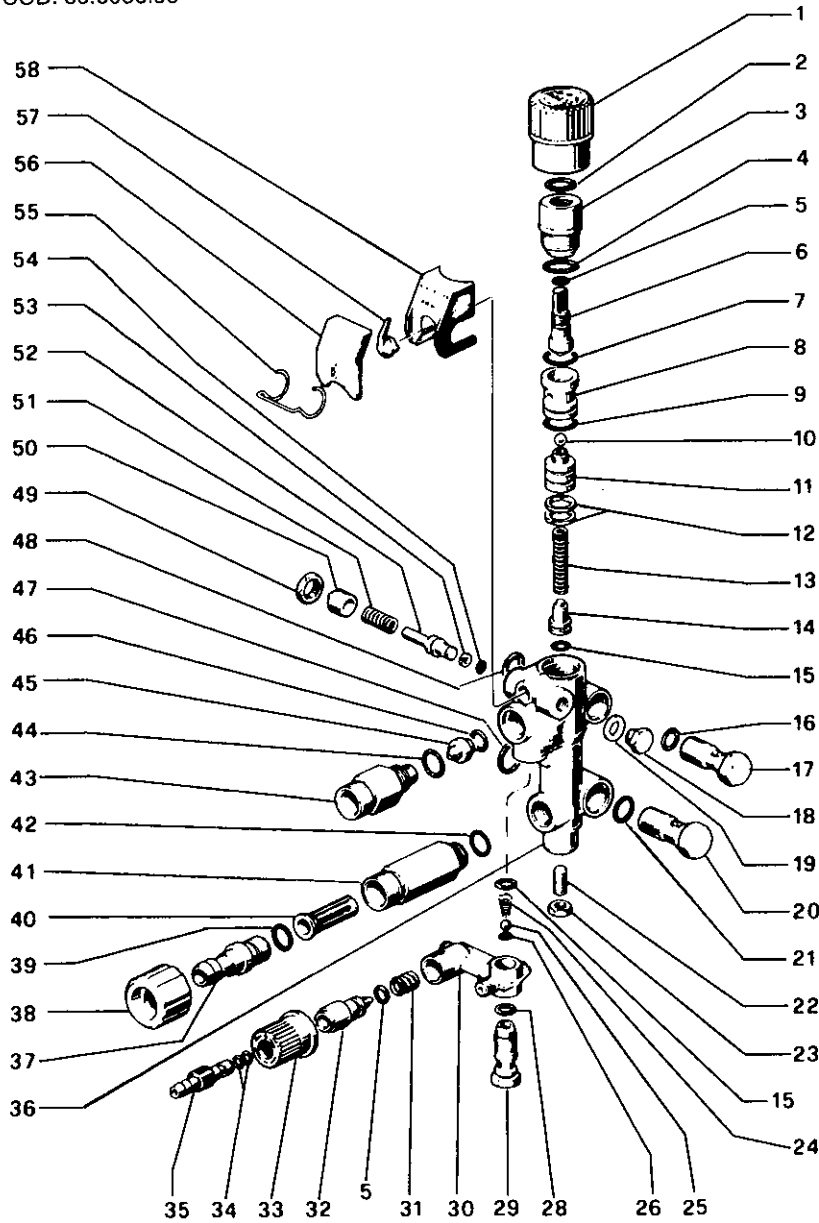


DIS. COD. 51.9548.00

KIT N.	KIT 94	KIT 95 (KR)	KIT 99 (KR 90-100)
Positions included	5-15-24-25-26-28 31-34-44-46	2-4-5-7-8-9-10-12 13-15-16-21-39-42 47-48-53-54	2-4-5-7-8-9 10-12-13-15 16-21-39-42 47-48-53-54
Posizioni incluse			
N. pcs.	1	1	1

== KR - KR 90 == == KR 100 ==

DIS. COD. 36.9500.00



*** TABLE «A»

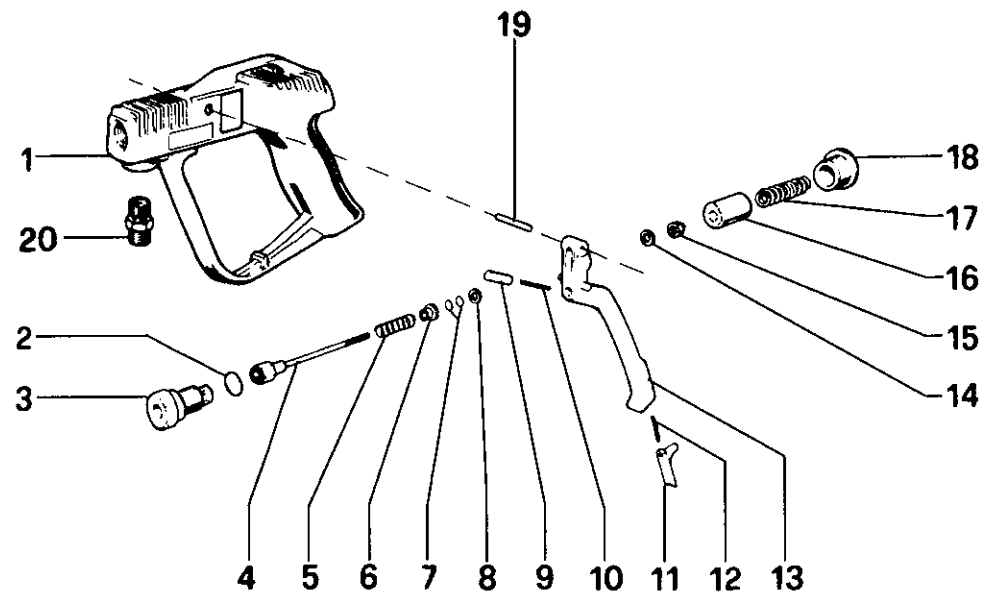
MOD.	POS.	CODE CODICE	N. PCS.	FOR PUMPS PER POMPE
KR1	11	36.2572.70	1	TURBO 8-70 TURBO 15-19-21
	45	10.0307.51	1	
KR2	11	36.2553.70	1	TURBO 11-50 TURBO 11-70
	45	10.0151.66	1	
KR90	11	36.2572.70	1	TURBO 8-90
	45	10.0307.51	1	
KR100	11	36.2595.70	1	TURBO 10-100
	45	10.0151.66	1	

POS.	CODE CODICE	N. PCS.
1	36.2583.51	1
2	90.3835.00	1
3	36.2556.70	1
4	90.3847.00	1
5	90.3580.00	2
6	36.2574.02	1
7	90.3598.00	1
8	36.2554.66	1
9	90.3596.00	1
10	97.4802.00	1
11	TABLE «A» ***	
12	90.5080.00	2
13	94.7344.00	1
14	36.2552.70	1
15	90.3582.00	2
16	90.3820.00	1
17	36.2567.70	1
18	98.1966.00	1
19	96.7100.00	1
20	36.2568.70	1
21	90.3827.00	1
22	99.3054.00	1
23	92.2218.00	1
24	94.8217.00	1
25	97.4782.00	1
26	90.3572.00	1
28	90.3585.00	1
29	36.2563.70	1
30	36.2562.51	1
31	94.7383.00	1
32	36.2564.70	1
33	36.2565.51	1
34	90.3570.00	2
35	36.2566.70	1
36	36.2582.41 - KR	1
	36.2588.41 - KR90 -100	1
37	36.2569.70	1
38	10.0119.02	1
39	90.3828.00	1
40	92.8925.00	1
41	36.2560.70 - M22x1,5	1
	36.2584.70 - 1/2 NPT	1
42	90.3591.00	1
43	10.0147.70 - M22x1,5	1
	10.0318.70 - 3/8 NPT	1
44	90.3832.00	1
45	TABLE «A» ***	
46	90.3822.00	1
47	90.3839.00	1
48	90.3833.00	1
49	92.2492.00	1
50	36.2580.70	1
51	94.7338.00	1
52	36.2579.70 - KR	1
	36.2589.70 - KR90 -100	1
53	90.5007.00 - KR	1
	90.5004.00 - KR90 -100	1
54	90.3568.00 - KR	1
	90.3567.00 - KR90 -100	1
55	94.8718.00	1
56	36.2577.51	1
57	36.2578.51	1
58	36.2586.01 - KR	1
	36.2590.01 - KR90 -100	1

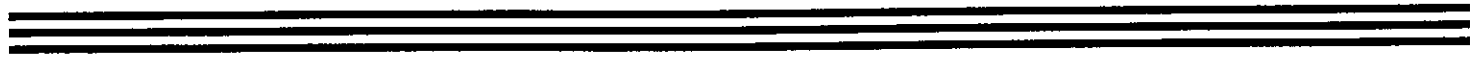
KIT N.	KIT 105
Positions included	2 - 3 - 4 7 - 8
Posizioni incluse	
N. pcs.	1

≡≡≡ P 10 ≡≡≡

DIS. COD. 18.9507.00



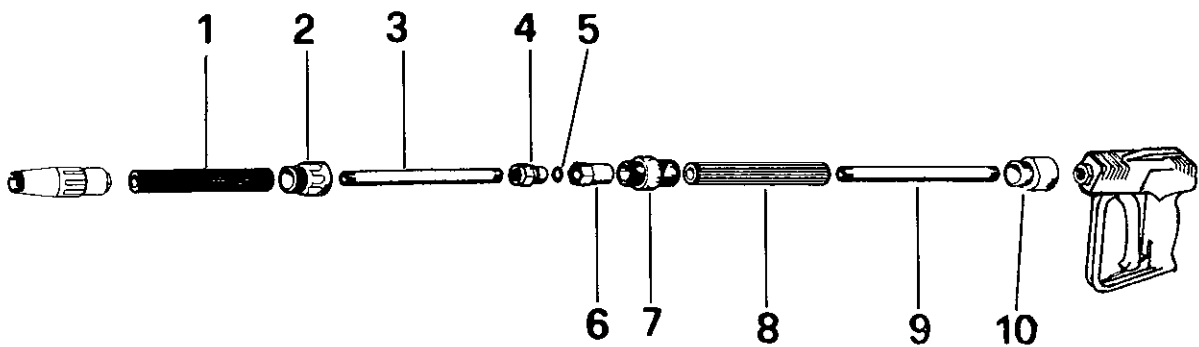
POS.	CODE CODICE	N. PCS.
1	18.2056.02	1
2	90.3841.00	1
3	18.2059.02	1
4	18.2071.02	1
5	94.7378.00	1
6	18.2042.70	1
7	90.3568.00	2
8	90.5007.00	1
9	18.2053.70	1
10	94.7305.00	1
11	18.2050.51	1
12	94.7303.00	1
13	18.2048.51	1
14	96.6840.00	1
15	92.1935.00	1
16	18.2052.70	1
17	94.7414.00	1
18	98.2192.00	1
19	97.6155.00	1
20	95.2840.00	1

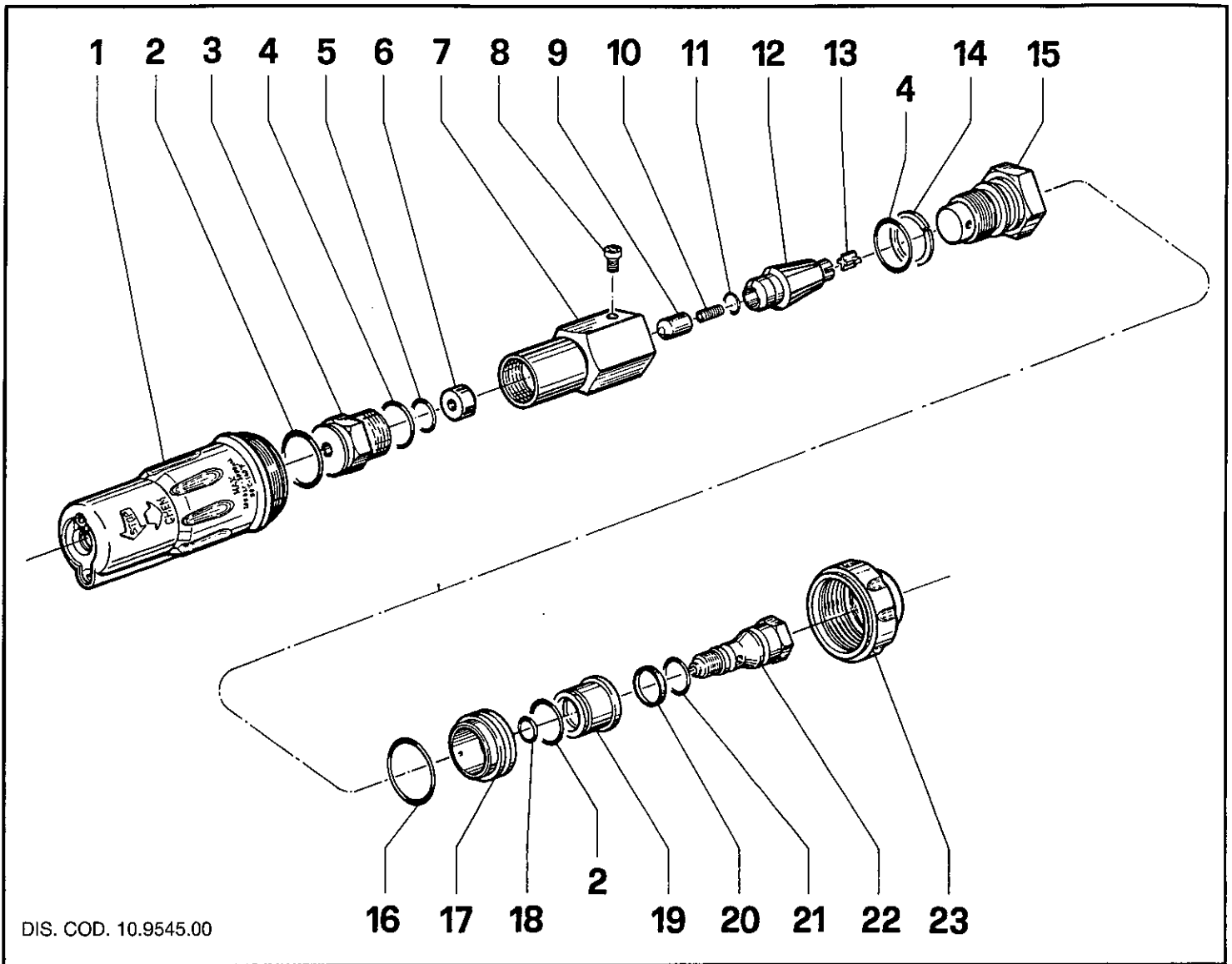


≡≡≡ "QUICK LANCE" ≡≡≡

POS.	CODE CODICE	N. PCS.
1	18.0106.98	1
2	10.0295.51	1
3	18.2033.89	1
4	10.0297.70	1
5	90.3820.00	1
6	10.0298.70	1
7	10.0296.51	1
8	18.0104.98	1
9	18.2033.89	1
10	10.0294.51	1

DIS. COD. 18.9500.00



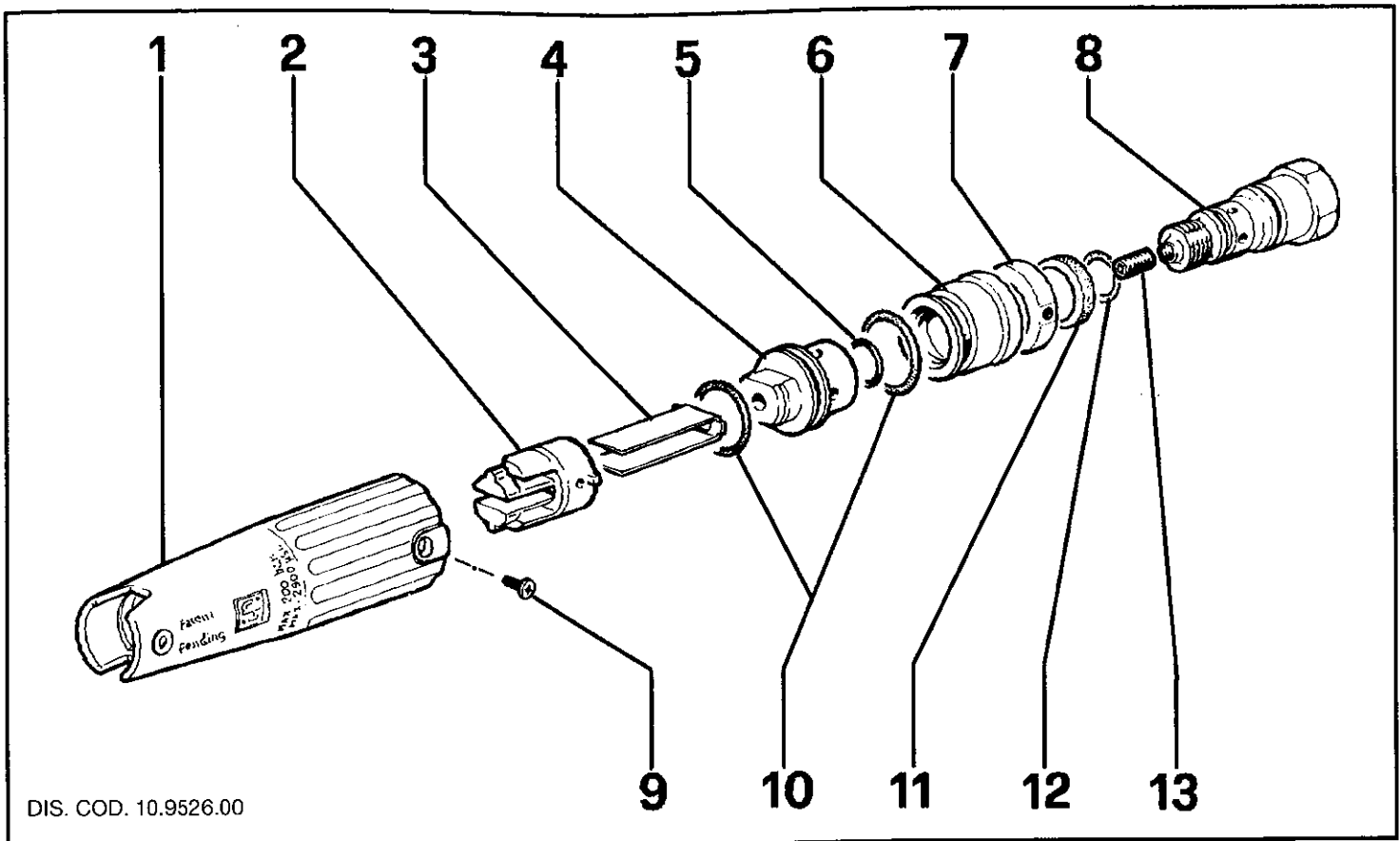


DIS. COD. 10.9545.00

POS.	CODE CODICE	N. PCS.
1	10.0568.51	1
2	90.3845.00	2
3	10.0450.70	1
4	90.3835.00	2
5	90.3585.00	1
6	10.0455.09	1
7	10.0451.70	1
8	99.0702.00	1
9	10.0456.09	1
10	Tab. "A"	
11	90.3574.00	1
12	10.0564.02	1
13	10.0453.51	1
14	90.5090.00	1
15	Tab. "A"	
16	90.3867.00	1
17	10.0567.51	1
18	90.3819.00	1
19	10.0485.70	1
20	90.2680.00	1
21	90.3827.00	1
22	10.0484.70	1
23	10.0566.51	1

TAB. "A"			
SERIES	POS.	CODE CODICE	N. PCS.
Turbo 8-90	10	140	1
	15	10.0454.70	1
Turbo 8-70 - 21	10	150	1
	15	10.0454.70	1
Turbo 15 - 19 - 10-100	10	155	1
	15	10.0471.70	1
Turbo 11/70	10	175	1
	15	10.0471.70	1

MULTIREG 99



DIS. COD. 10.9526.00

POS.	CODE CODICE	N. PCS.
1	10.0483.51	1
2	10.0299.51	1
3	10.0304.76	1
4	10.0486.70	1
5	90.3819.00	1
6	10.0485.70	1
7	10.0496.70	1

POS.	CODE CODICE	N. PCS.
8	10.0484.70	1
9	99.0702.00	2
10	90.3845.00	2
11	90.2680.00	1
12	90.3827.00	1
13	TAB. "A"	1

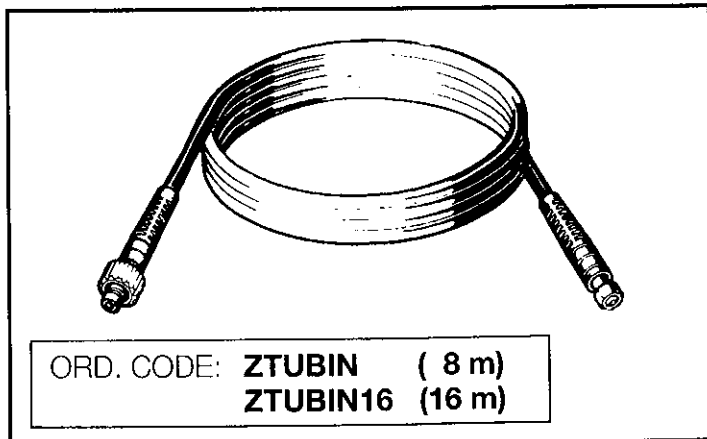
TAB. "A"	
Model • Modèle • Modell Modelo • Modello • Malli	Nozzle • Buse Düse • Boquilla • Ugello Munstycke • Dyse
Turbo 8-90	Cod. 135
Turbo 8-70 - 21	Cod. 140
Turbo 19 - 10-100	Cod. 145
Turbo 15	Cod. 150
Turbo 11/70	Cod. 165
Turbo 11/50	Cod. 180

- HIGH PRESSURE HOSE
- TUYAU HAUTE PRESSION
- HOCHDRUCKSCHLAUCH
- TUBO DE ALTA PRESIÓN
- TUBO ALTA PRESSIONE

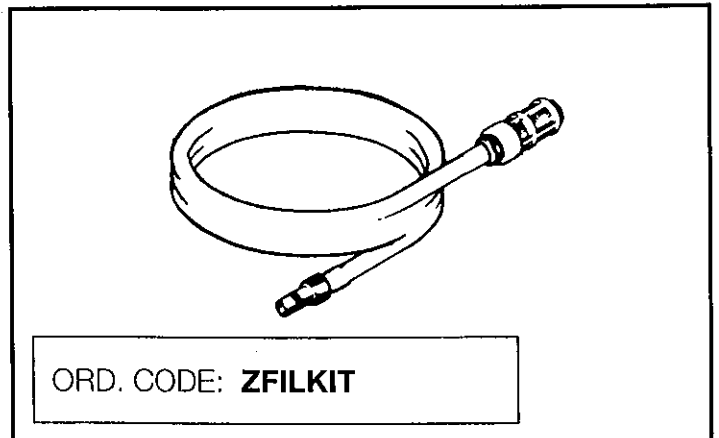
- HOGEDRUKSLANG
- HÖGTRYCKSSLANG
- HØJTRYKSSLANGE
- PAINELETKU
- HØYTRYKKSANGE

- CHEMICAL FILTER KIT
- KIT FILTRE DÉTERGENT
- CHEMIE - FILTER KIT
- KIT FILTRO PARA DETERGENTE
- KIT FILTRO DETERGENTE

- CHEMICAL FILTER KIT
- KEMIKALIE FILTER KIT
- KEMIKALIE FILTER KIT
- PESUAINESUODATIN
- KJEMIKALIE KIT



ORD. CODE: **ZTUBIN (8 m)**
ZTUBIN16 (16 m)



ORD. CODE: **ZFILKIT**



CAUTION

CAUTION:

Repairs by qualified personnel only.

PRECAUTION:

Réparations par personnel spécialisé seulement.

ACHTUNG:

Reparaturen nur durch Fachpersonal.

PRECAUCION:

Unicamente personal calificado deberia hacer reparaciones.

PRECAUÇÃO:

Somente pessoal qualificado efectuar consertos.

PRECAUZIONE:

Affidare la riparazione unicamente a personale esperto.

WAARSCHUWING:

Reparaties alleen door wakbekwame mensen laten uitvoeren.

VARNING:

Skall endast reparerast av kvalifiserad personal.

ADVARSEL:

Reparationer ma kun foretages av kvalificerede tekniker.

CAUTIN:

Vain koulutettu henkilö saa suorittaa korjaustyöt.

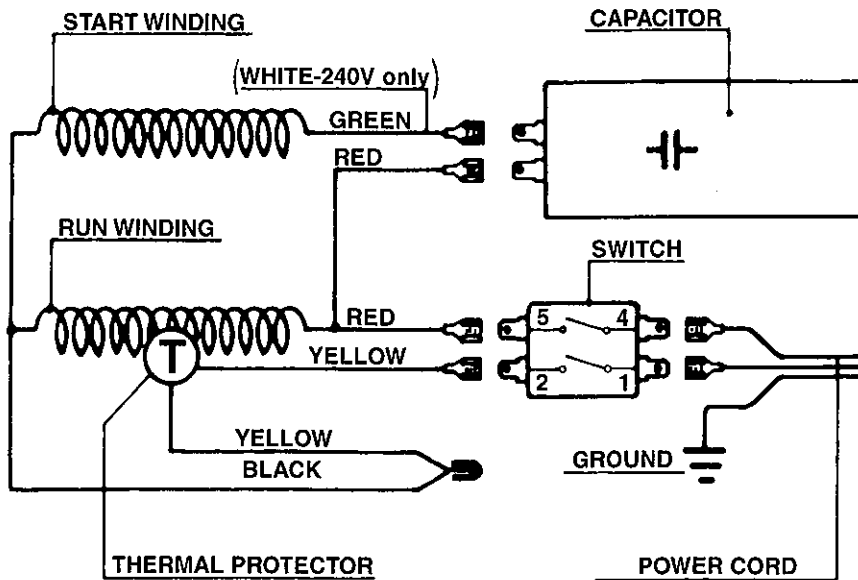
ADVARSEL:

Ma bare repareres av kvalifisert personell.

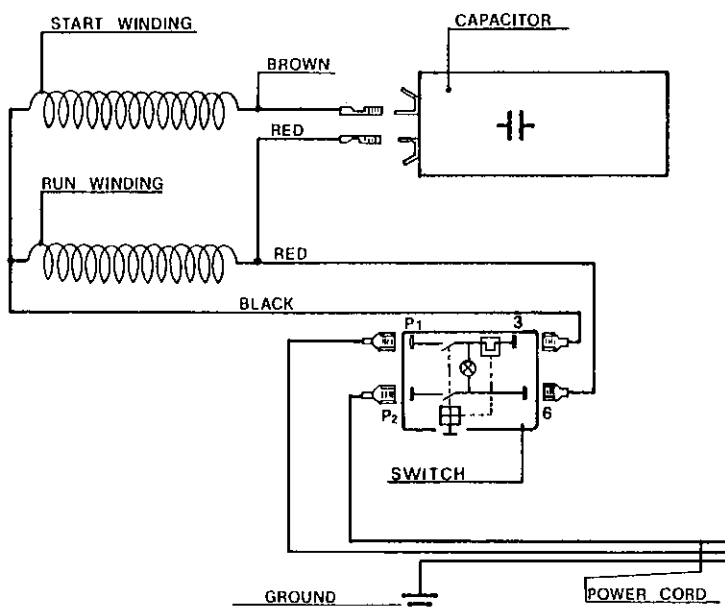
ΠΡΟΣΟΧΗ:

Οι εργασίες γίνονται μόνο από ειδικευμένο προσωπικό.

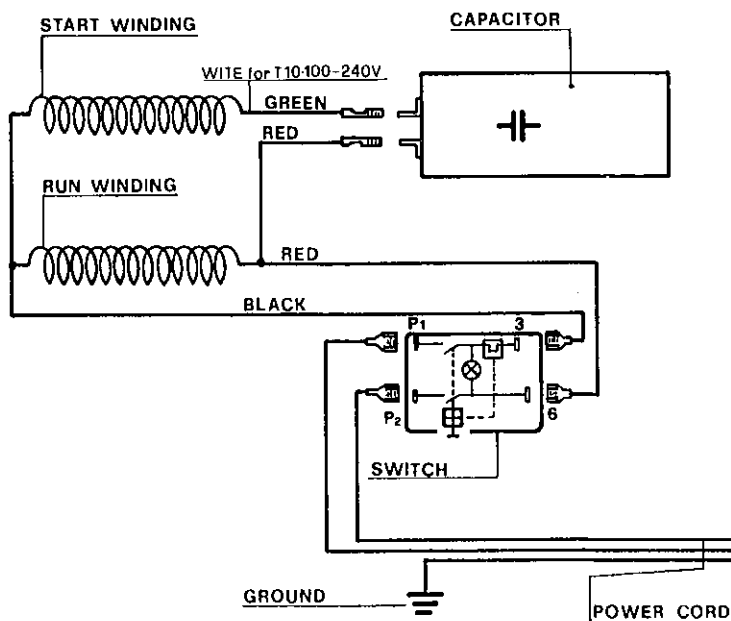
For TURBO 8-70 - 11-50



For TURBO 15 - 19 - 21



For TURBO 8-90 - 11-70 - 10-100



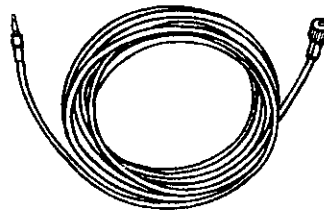
BRUSHKIT



ORD. CODE: **ZBRUSHKIT**

- Brush kit
- Brosse rotative
- Bürstenkit
- Cepillo rotativo
- Spazzola rotante
- Roterende borstelset
- Roterande borste
- Roterende børste
- Pyörivä pesuharja

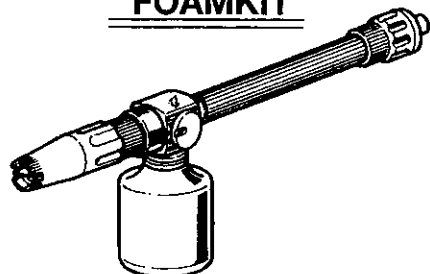
DRAINKIT



ORD. CODE:	FOR MODEL
ZDRAINKIT 1	Turbo 8/70-8/90-10/100-15-19-21
ZDRAINKIT 2	Turbo 11/50 - 11/70

- Drain cleaning kit
- Kit déboucheur
- Rohrreinigungskit
- Kit limpieza de tuberías
- Kit pulizia tubazioni
- Riool ontstoppingsset
- Kloakrengöringsventil
- Rørrensesæt
- Putkenaukaisija
- Rørrengjøringsutstyr

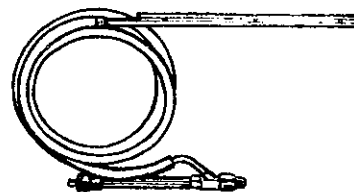
FOAMKIT



ORD. CODE:	FOR MODEL
ZFOAMKIT 0	Turbo 19 - 10/100
ZFOAMKIT 1	Turbo 8/70 - 8/90 - 21
ZFOAMKIT 2	Turbo 15
ZFOAMKIT 3	Turbo 11/70

- Foamer
- Lance à mousse
- Schaumlanze
- Lanza para espuma
- Lancia schiuma
- Schuimreinigungsset
- Skumlanse
- Vaahdotuslaite

SANDKIT

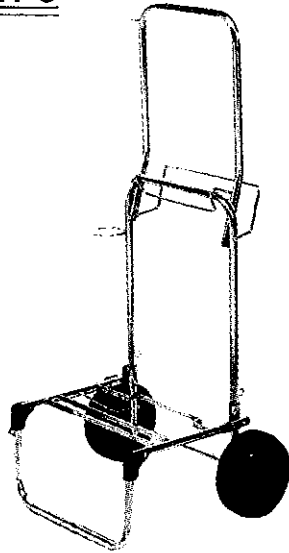


ORD. CODE:	FOR MODEL
ZSANDKIT 0	Turbo 8/90 - 10/100
ZSANDKIT 1	Turbo 8/70 - 19 - 21
ZSANDKIT 2	Turbo 11/70 - 15
ZSANDKIT 4	Turbo 11/50

- Sandblasting kit
- Kit de sablage
- Sandstrahlkit
- Kit arenador
- Testina sabbiente
- Zandstraalset
- Sandbläster
- Sandblæsningssæt
- Hiekkalaite
- Sandblåser

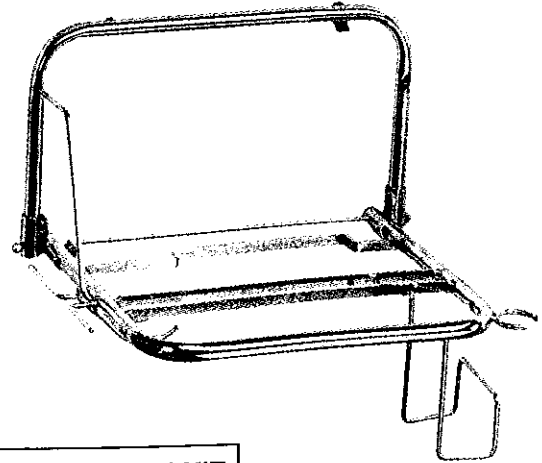
CARTKIT 3

ORD. CODE: ZCAR3



- Trolley
- Chariot
- Fahrwagen
- Carro
- Carrello
- Kar
- Kärra
- Vogn
- Kuljetusvaunu
- Tralle

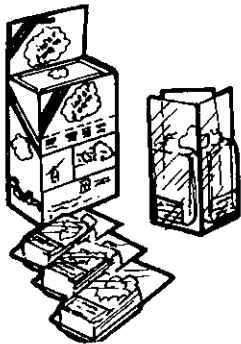
WALLKIT



ORD. CODE: ZWALLKIT

- Wall bracket kit
- Console murale
- Wandhalterung
- Soporte mural
- Supporto pensile
- Wandrek
- Vægg holdare
- Vægkonsol
- Seinäteline
- Veggbrakett

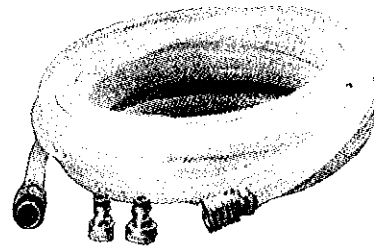
INTERFOAM



ORD. CODE: ZDET

- Foam detergent
- Détergent moussant
- Schaumdetergent
- Detergente espumogeno
- Detergente schiumogeno
- Schuimreinigingsmiddel
- Skumshampo
- Skum vaskemiddel
- Vaahdotusaine
- Skumshampo

INLETKIT



ORD. CODE: ZINLEKIT

- Inlet kit
- Kit arrivée d'eau
- Wasseranschlußkit
- Kit entrada de agua
- Kit tubo alimentazione
- Watertoevoer aansluitset
- Vattenanslutning kit
- Vandtilførelse kit
- Tulovesiletku pikaliittimillä
- Vanntilførsel kit

DECLARATION OF CONFORMITY

The manufacturer **INTERPUMP GROUP S.p.A. - Via E. Fermi, 25 - 42049 S. ILARIO D'ENZA (RE) - Italy** **DECLARES** that the machine identified and described below:

Type of machine: High Pressure Cleaner
Factory mark: INTERPUMP GROUP
Model: QUIKY

is in conformity with the requirements of the following European Commission directives:

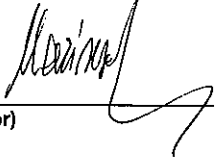
- Machine directive 98/37 CE, replacing directive 89/392 CE as amended by directives 91/368 CE and 93/68 CE
- Low voltage directive 73/23 CE, amended by directive 93/68 CE
- Electromagnetic Compatibility directive 89/336 CE, amended by directives 91/263 CE, 92/31 CE and 93/68 CE
- Product Liability directive 85/374 CE

- Noise Emissions directive 2000/14, with the following declared levels of:
Measured Sound Power: $L_w = 93$ dB(A) - Guaranteed Sound Power: $L_w = 94$ dB(A)

Harmonized standards adopted for European market:

EN-292.1. EN-292.2 . EN-60.335.1 . EN-60.335.2.79 . EN-ISO-3744 . EN-414 . EN-50081.1 . EN-50082.1 . EN-60704.1

Signature



Ing. Paolo Marinsek (Managing Director)

DÉCLARATION DE CONFORMITÉ

Le fabricant **INTERPUMP GROUP S.p.A. - Via E. Fermi, 25 - 42049 S. ILARIO D'ENZA (RE) - Italie** **DÉCLARE** que l'appareil identifié et décrit ci-après:

Type d'appareil: nettoyeur haute pression
Marque d'origine: INTERPUMP GROUP
Modèle: QUIKY

est conforme aux directives CEE :

- Directive machines 98/37 CE remplaçant la directive 89/392 CE modifiée par les directives 91/368 CE et 93/68 CE
- Directive sur la basse tension 73/23 CE modifiée par la directive 93/68 CE
- Directive sur la compatibilité électromagnétique 89/336 CE modifiée par les directives 91/263 CE, 92/31 CE et 93/68 CE
- Directive sur la responsabilité du fabricant 85/374 CE

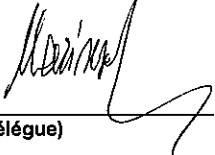
- Directive 2000/14 sur les niveaux de bruit selon les niveaux suivants de :

Puissance sonore mesurée: $L_w = 93$ dB(A) - Puissance sonore garantie: $L_w = 94$ dB(A)

Normes harmonisées adoptées pour le marché CEE:

EN-292.1. EN-292.2 . EN-60.335.1 . EN-60.335.2.79 . EN-ISO-3744 . EN-414 . EN-50081.1 . EN-50082.1 . EN-60704.1

Signature



Ing. Paolo Marinsek (Administrateur Délégué)

KONFORMITÄTSERKLÄRUNG

Der Hersteller **INTERPUMP GROUP S.p.A. - Via E. Fermi, 25 - 42049 S. ILARIO D'ENZA (RE) - Italien** **ERKLÄRT HIERMIT**, dass die nachstehend definierte und beschriebene Maschine

Typ: Hochdruckreiniger

Fabrikat: INTERPUMP GROUP
Modell: QUIKY

den folgenden EG-Richtlinien entspricht:

- Maschinenrichtlinie 98/37/EWG in Ersetzung der Richtlinie 89/392/EWG, geändert durch die Richtlinien 91/368/EWG und 93/68/EWG
- Niederspannungs-Richtlinie 73/23/EWG, geändert durch die Richtlinie 93/68/EWG
- Richtlinie zur elektromagnetischen Verträglichkeit 89/336/EWG, geändert durch die Richtlinien 91/263/EWG, 92/31/EWG und 93/68/EWG
- Richtlinie über die Produkthaftung des Herstellers 85/374/EWG

- Richtlinie 2000/14 über Schallemissionen mit folgenden gemessenen Schallpegeln:

Gemessener Schallpegel: $L_w = 93$ dB(A) - Garantierter Schallpegel: $L_w = 94$ dB(A)

Für den EU-Markt angewendete harmonisierte Normen:

EN-292.1. EN-292.2 . EN-60.335.1 . EN-60.335.2.79 . EN-ISO-3744 . EN-414 . EN-50081.1 . EN-50082.1 . EN-60704.1

Unterschrift



Ing. Paolo Marinsek (Geschäftsführendes Verwaltungsratsmitglied)

DECLARACIÓN DE CONFORMIDAD

El fabricante **INTERPUMP GROUP S.p.A., sito en la calle Fermi n° 25 - 42049 S. ILARIO D'ENZA (RE), Italia** **DECLARA** que la máquina que se describe a continuación:

Marca de fábrica: Hidrolimpiadora de alta presión

Modelo: INTERPUMP GROUP
QUIKY

Cumple los requisitos establecidos en las siguientes directivas CE:

- Directiva de Máquinas 98/37/CE en sustitución de la directiva 89/392/CE y modificada por las directivas 91/368/CE y 93/68/CE
- Directiva de Baja Tensión 73/23/CE modificada por la directiva 93/68/CE
- Directiva de Compatibilidad Electromagnética 89/336/CE modificada por las directivas 91/263/CE, 92/31/CE y 93/68/CE
- Directiva de responsabilidad civil por productos defectuosos 85/374/CE

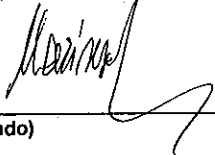
- Directiva de emisiones sonoras 2000/14/CE, con los siguientes niveles:

Potencia sonora medida: $L_w = 93$ dB(A) - Potencia sonora garantizada: $L_w = 94$ dB(A)

Normas armonizadas en la Unión Europea:

EN-292.1. EN-292.2 . EN-60.335.1 . EN-60.335.2.79 . EN-ISO-3744 . EN-414 . EN-50081.1 . EN-50082.1 . EN-60704.1

Firma



Ing. Paolo Marinsek (Consejero Delegado)